

AdventurED

Programme Guide

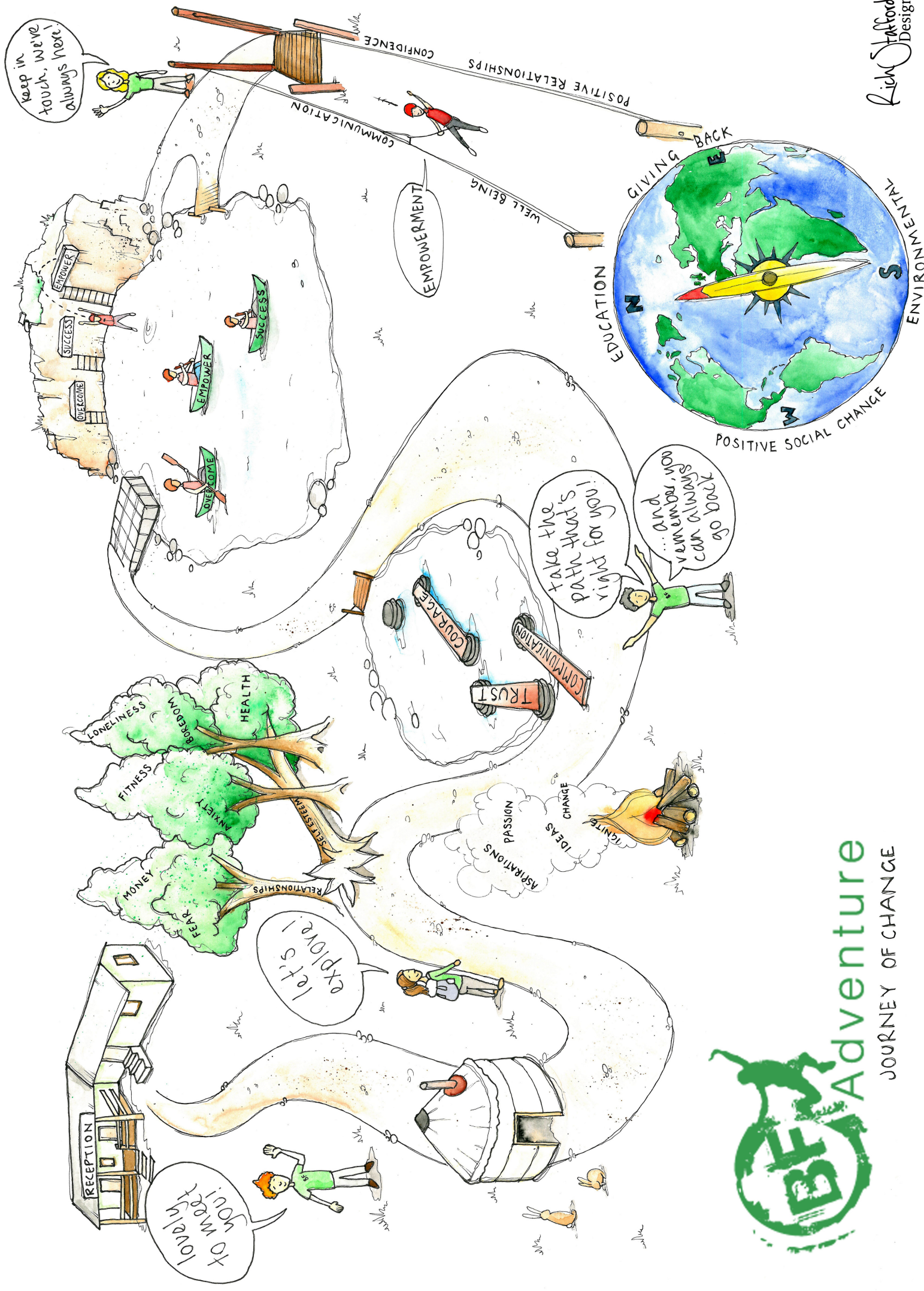


Adventure

www.bfadventure.org

01326 340912

BF Adventure, Goodygrane Quarry, Halvasso, Penryn TR10 9BX



BF Values

We work in line with a set of core organisational values. To deliver our mission. The team at BF Adventure bring a wide range of skills and experience to our provision which has enabled us to develop a unique approach to our delivery; combining trauma informed delivery with youth work outdoors.

BF ADVENTURE VALUES

JOURNEY OF CHANGE

CHANGING PERSPECTIVES



We embrace diversity and recognise everyone has a part to play in life. No one should face discrimination and we challenge both its roots and its impact.



TRUST

At BF Adventure we believe that our environment, should be a safe space for all, igniting positive relationships based on trust and respect.

EMPOWERING

We listen to you and value your opinion. We enable you to face challenges and make informed decisions.



COLLABORATING

We believe working together achieves the best results. We actively explore new partnerships with those who share our values.



INTEGRITY

We welcome a culture of honesty and openness that allows us to learn and grow together. We do what we say!



SUSTAINABILITY

We seek to create lasting change and to consider future generations in all of our decision making.

Safeguarding children and young people underpins everything we do

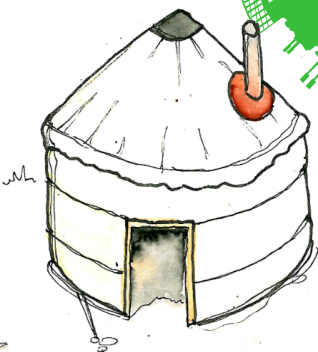
16+ Programme AdventurED



AdventurED is a programme designed for young people aged 16 - 19, who want to meet new people, have fun, learn new skills and gain a qualification

The programme runs over 2 days each week for 10 weeks 10.00-14.30

The programme will allow young people to gain a Level 1 Award in Progression, explore their strengths, develop life skills and build confidence, with support from 2 youth workers offering wrap around support.



Programme

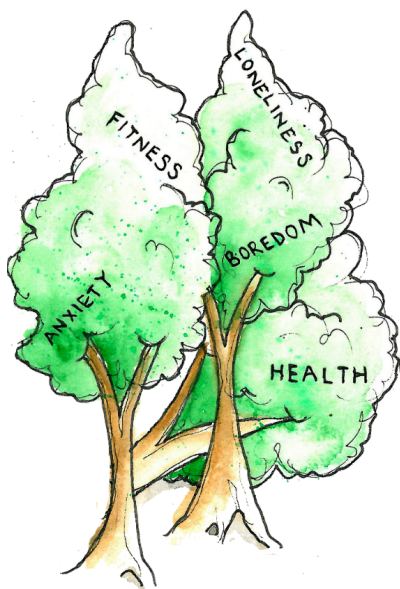
WEEK 1 - 6

During weeks 1 - 6 young people will attend BF Adventure twice a week. They will participate in our adventurous outdoor activities, such as climbing, canoeing, bush craft and team building.

Throughout this time the young people will carry out workbook-based course work, to gain a Level 1 Award in Skills for Living and Work.

WEEK 7 - 10

Weeks 7 - 10 will be spent developing CV's and looking at the next steps moving on from BF. A lot of the young people that come to us on the programme have support outside of BF, however, some don't. This time will be used to look at options that are available for them, including signposting to other organisations and partnership work where support is already in place.



Feedback

BF has helped me get a qualification so I can go to college. It also showed me that i am capable of doing more if I set my mind to it.

Young Person

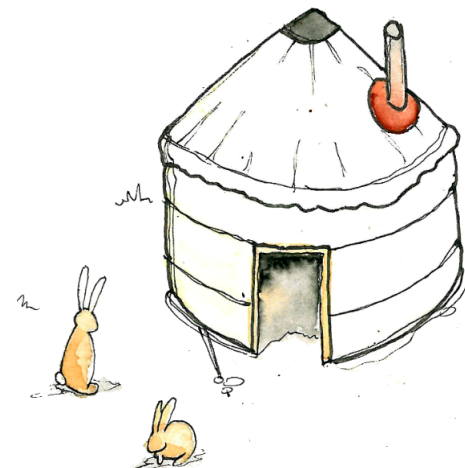
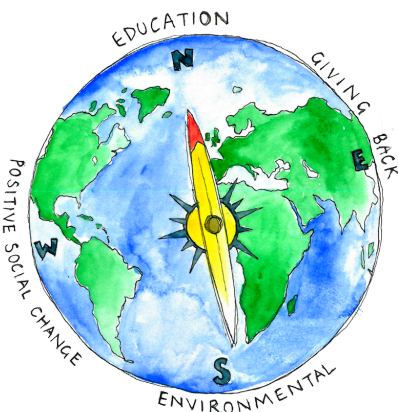
BF has helped me trust and put faith in new people, you are taken at face value and respected.

Young Person

**What
people say
about BF**

BF has been a life line for the young person, they have gained a qualification after not being in school since year 7 and they are now looking for a job.

Referrer



Our Site



Our site comprises of 60 acres of heathland, woodland and five flooded granite quarries providing a habitat for a rich variety of flora and fauna, insects, reptiles and larger species of wildlife.

We strive hard to ensure our activities are accessible to all and we have a purpose-built wheelchair abseil ramp, kite harness and all-terrain wheelchair. We also have a "Changing Places" facility.

Activities -

Archery

Abseiling

Adventure quarry

Bush craft

Climbing

Kayaking

Orienteering

Quarrysteering

Zipwire

Arts and crafts

Canoeing

Cooking

Low ropes

Problem solving

Raft building



For more information



Contact:

Gina Ashby-Smith

AdventureED Coordinator -

gina.ashbysmith@bfadventure.org

Please note my normal working days are - Wednesday, Thursday and Friday.

Or call us on 01326 340912



www.bfadventure.org

01326 340912

Adventure

BF Adventure, Goodygrane Quarry, Halvasso, Penryn TR10 9BX