



BF Adventure – Response to Covid 19 (last updated 17th March 2020)

Dear Stakeholder, referrer, parent/guardian and participant at BF Adventure

As you are aware, the world has entered uncharted territory with what is now classed as a world pandemic related to this new strand of Coronavirus.

We wish to reassure you that the entire team at BF Adventure is placing the wellbeing of our clients, young and old at the heart of all our decision making and we are taking appropriate measures to support the management of this virus, prevention of its spread and early identification and support of anyone whom in due course may become infected.

We currently believe that the benefits gained by the clients we support at our outdoor, open and supportive site outweigh any risks in attending although we are closely monitoring Government advice as detailed within the links below and will follow appropriate guidance when provided.

[Guidance for Educational Settings](#)

[NHS Covid 19 Guidance](#)

[LGA's Coronavirus information for Councils](#)

To facilitate handwashing, we have now installed additional sinks and hot water supplies across the site with full provision of appropriate soaps and washing instructions.

All staff have been informed to self-isolate immediately should they have travelled from any notified areas and/or display any related symptoms.

All staff will support anyone with suspected symptoms to move to an appropriate area on site and to seek immediate medical advice, separating themselves from other clients.

Should any confirmed case of Coronavirus occur, we will immediately inform Public Health England who will provide further advice.

Additional cleaning and regular disinfectant routines are in place, with all communal surfaces, handles etc. cleaned on a regular basis.

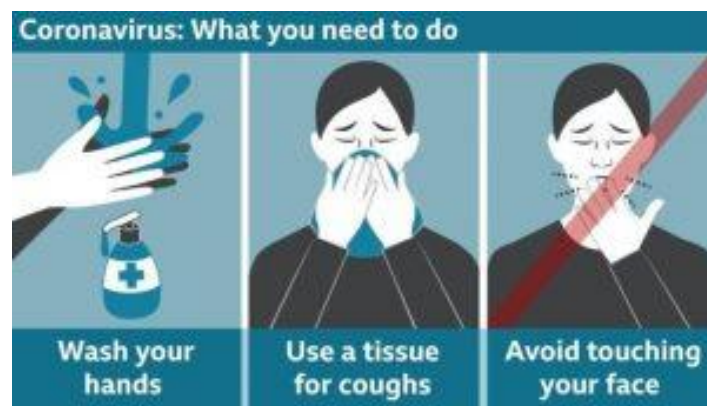
All staff and visitors/clients will be temperature screened upon arrival at the site and monitored for any of the recognised symptoms

BF Adventure also requests that all referrers, support workers and parents/guardians follow guidelines with regards to self-isolation and do not send anyone to the site whom may have symptoms and/or should be self-isolating as per official guidance. Should we suspect any symptom's we will support appropriately onsite but cannot include them within our activity programmes and will need to contact you to arrange immediate collection.

Specific symptoms are:

- A fever – above 37.8 degrees
- A new persistent cough

The staff are placing significant focus upon personal hygiene and will insist that all clients on site follow the guidelines provided and as detailed below, anyone failing to follow these guidelines will be asked to leave activities and leave the site to protect the safety of other participants and staff.



There are general principles anyone can follow to help prevent the spread of respiratory viruses, including:

- Washing your hands often – with soap and water, or use alcohol sanitiser if handwashing facilities are not available. This is particularly important after taking public transport
- Covering your cough or sneeze with a tissue, then throwing the tissue in a bin. See Catch it, Bin it, Kill it
- Avoid touching your eyes, nose, and mouth with unwashed hands
- Avoid close contact with people who are unwell
- People who feel unwell should stay at home and should not attend our services

All those attending our services should wash their hands:

- Before leaving home
- On arrival
- After using the toilet
- After breaks and shared / sporting activities
- Before food preparation
- Before eating any food, including snacks
- Before leaving the service

Hand-washing technique with soap and water



We aim to remain open as long as it remains safe to do so, to provide our services to the best of our abilities and to safeguard the future health and financial viability of the organisation such that we can continue to grow and develop into the future.

We will provide regular updates, will constantly review official guidance and appreciate the support of everyone in our community at this challenging time for all.

Adrian Richards
CEO

Robert Padbury
Chair of BF Adventure Board of Trustees